

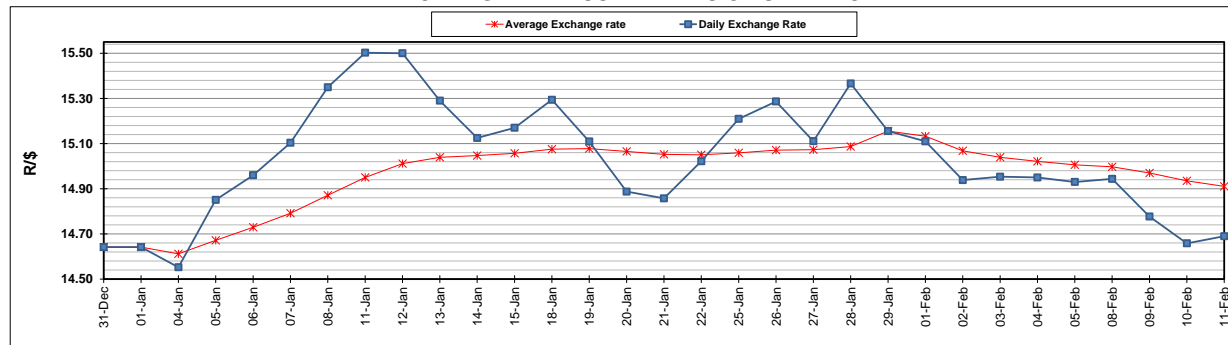
	PETROL 95 ULP	PETROL 93 ULP & LRP	DIESEL 0.05%	DIESEL 0.005%	ILL. PAR.
GAUTENG PUMP PRICE (SA c/l) AS FROM 03/02/2021	1,567.000	1,550.000	-	-	-
WHOLESALE PRICE (SA c/l) AS FROM 03/02/2021	-	-	1,358.420	1,360.820	798.688
SINGLE NATIONAL MAXIMUM RETAIL PRICE	-	-	-	-	1,008.000
BASIC FUEL PRICE - 11/02/2021 (SA c/l)	638.736	629.719	644.330	648.164	623.738
PRESS RELEASE CONTRIBUTION TO BFP 03/02/2021 - 11/02/2021 (SA c/l)	600.170	593.170	599.630	602.030	586.128
UNIT OVER/(UNDER) RECOVERY - 11/02/2021 (SA c/l)	(38.566)	(36.549)	(44.700)	(46.134)	(37.610)
AVERAGE BASIC FUEL PRICE 29/01/2021 - 11/02/2021	633.050	624.422	627.496	631.254	608.908
AVERAGE UNIT OVER/(UNDER) RECOVERY 29/01/2021 - 11/02/2021	(57.180)	(55.552)	(45.266)	(46.924)	(40.480)

### ANALYSIS MOVEMENT OF AVERAGE OVER/(UNDER) RECOVERY

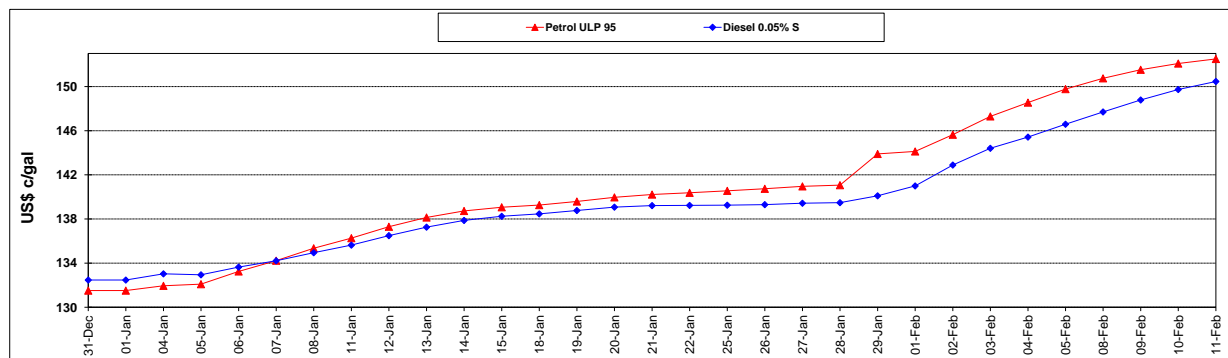
	PETROL 95	PETROL 93	DIESEL 0.05%	DIESEL 0.005%	ILL. PAR.
- MOVEMENT IN INTERNATIONAL PRODUCT PRICES	(64.673)	(62.943)	(52.694)	(54.396)	(47.688)
- MOVEMENT IN EXCHANGE RATE	7.493	7.391	7.428	7.472	7.208
AVERAGE UNIT OVER/(UNDER) RECOVERY 29/01/2021 - 11/02/2021	(57.180)	(55.552)	(45.266)	(46.924)	(40.480)

### R/\$ EXCHANGE RATE - (R/\$14.6900 - 11/02/2021)

#### EXCHANGE RATE USED IN BASIC FUEL PRICE



#### INTERNATIONAL PRODUCT PRICES OF BASKET USED IN BASIC FUEL PRICE



#### BASIC FUEL PRICE IN SA CENTS PER LITRE

